

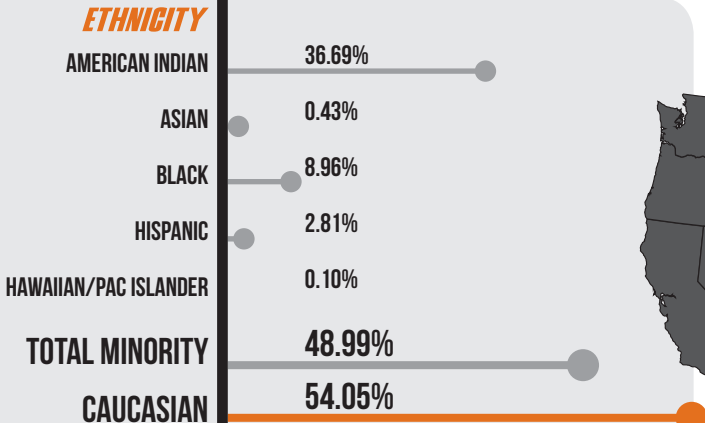


CAMPUS PROFILE

CONNORS STATE COLLEGE | ACADEMIC YEAR 2014-2015

3,116 TOTAL STUDENTS

FOUNDED IN 1908, WITH CAMPUSES IN MUSKOGEE AND WARNER, CONNORS STATE COLLEGE IS GOVERNED BY THE OKLAHOMA A&M BOARD OF REGENTS WITH THE MISSION OF BUILDING FUTURES ONE AT A TIME AS WE PROMOTE EXCELLENCE IN OUR COMMUNITY AND THE GLOBAL SOCIETY.



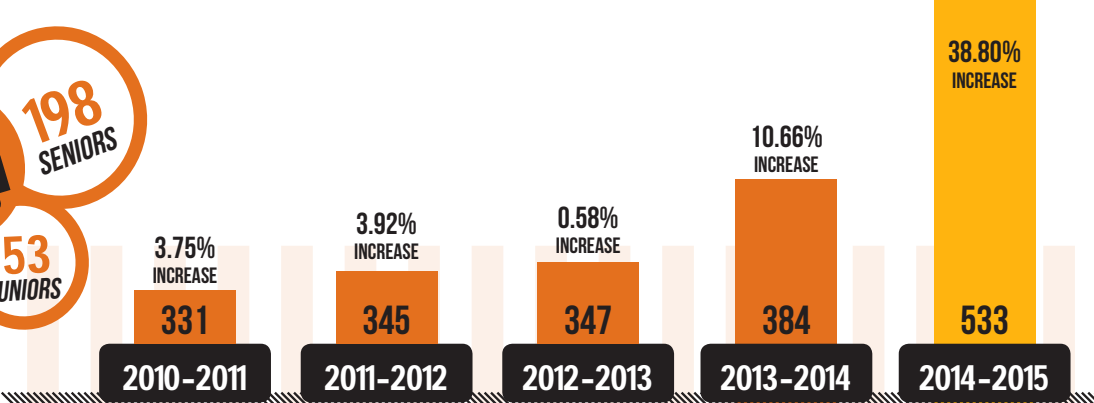
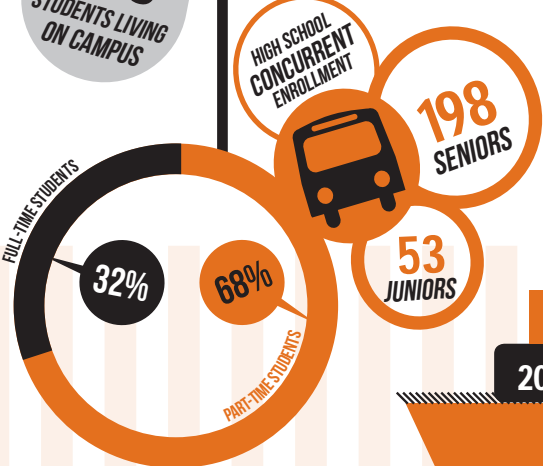
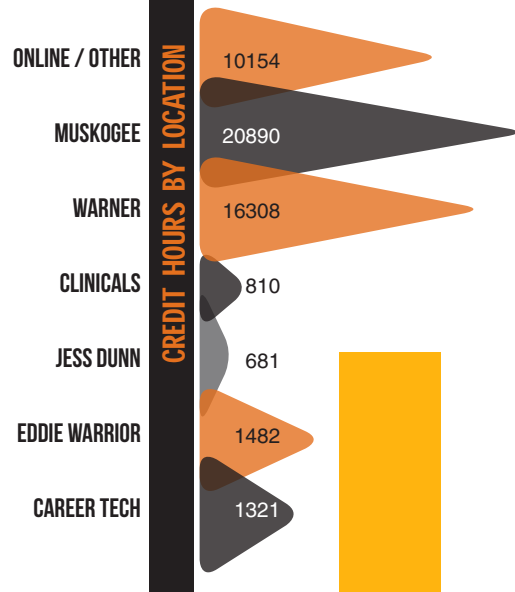
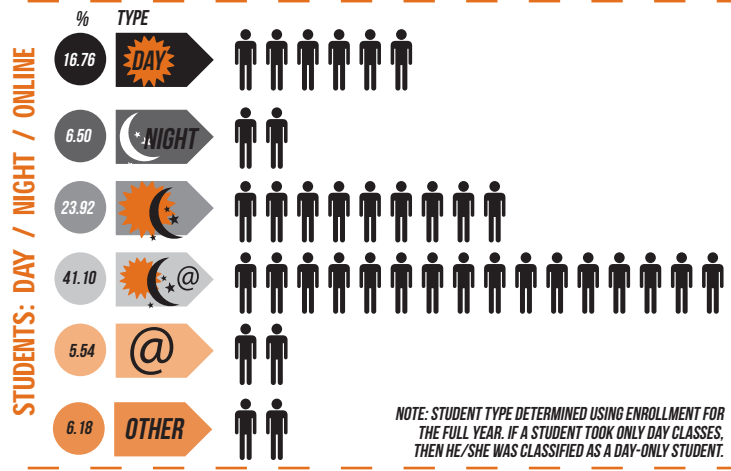
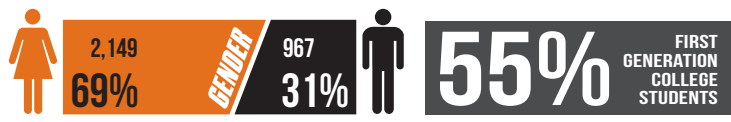
NOTE: THE TOTAL ETHNIC COUNT MAY NOT EQUAL TOTAL STUDENTS AS INDIVIDUALS MAY SELECT MULTIPLE OR NO ETHNICITIES.

25.54
AVERAGE AGE

19.29
AVERAGE ACT

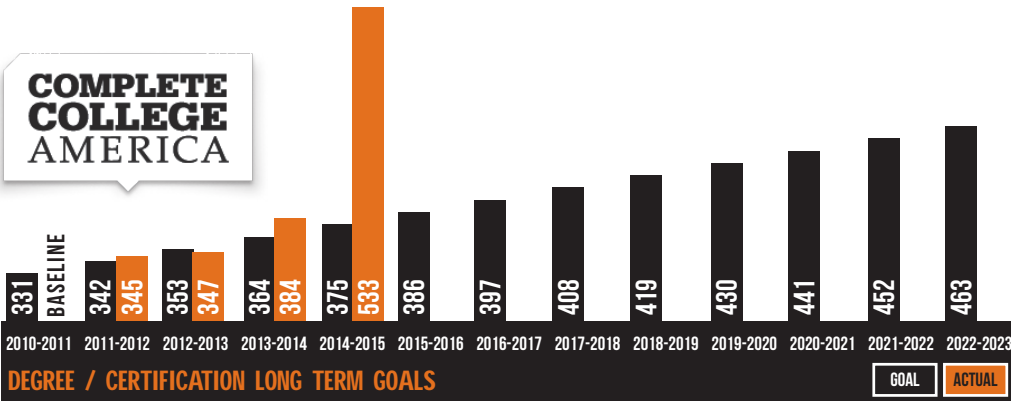
705
TRANSFER STUDENTS

363
STUDENTS LIVING ON CAMPUS



GRADUATES BY ACADEMIC YEAR

COMPLETE COLLEGE AMERICA



ANNUAL SCHOLARSHIPS

\$1,201,624

TOTAL INSTITUTIONAL SCHOLARSHIPS

\$353,954

\$325,584

OKLAHOMA PROMISE WORK STUDY

ENROLLMENT



3-YEAR ENROLLMENT TRENDS BY HEADCOUNT *

*Note: Enrollment numbers are cumulative, unduplicated for the academic year as set forth by the Oklahoma State Regents for Higher Education. The academic year consists of Summer, Fall, Spring - ie. Summer '14, Fall '14, Spring '15. Data based on OSRHE preliminary enrollment information as of the 11th class day of each semester.

RETENTION



3-YEAR RETENTION TRENDS BY HEADCOUNT *

*Note: Retention numbers are cumulative, unduplicated for the academic year as set forth by the Oklahoma State Regents for Higher Education. The academic year consists of Summer, Fall, Spring - ie. Summer '14, Fall '14, Spring '15. Data based on enrollment information as of the 14th week of each semester.

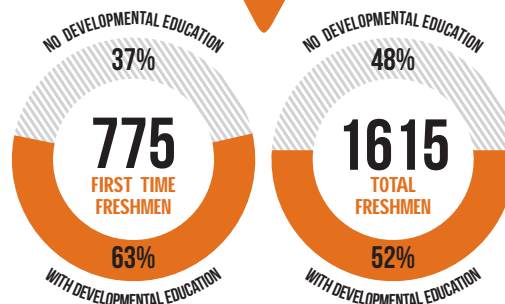
TOP 5 MAJORS

RANK	PROGRAM	FY 14-15	%
#1	GENERAL EDUCATION AA	1111	36.75%
#2	PRE-NURSING NURSING AS / AAS	700	23.16%
#3	BUSINESS ADMINISTRATION AS	327	10.82%
#4	AGRICULTURE AS	167	5.52%
#5	BIOLOGICAL SCIENCE AS	154	5.09%

DEVELOPMENTAL EDUCATION ENROLLMENT

TERM	DEV ED COURSES	SECTIONS	STUDENTS	CR HRS
2014-2015	10	111	981	5440
ENGLISH	7	43	384	1618
MATH	3	68	889	3822

*Individual students may be enrolled in more than one Dev. Ed. Course



EXTERNAL AFFAIRS: \$11,291,967*

FOUNDATION GROWTH

- \$4,137,886
- \$3,032,975
- \$1,809,339
- \$1,134,352
- \$905,435

ENDOWMENT GROWTH

- \$1,424,082
- \$663,769
- \$644,661
- \$612,521
- \$596,134

COMPETITIVE GRANTS

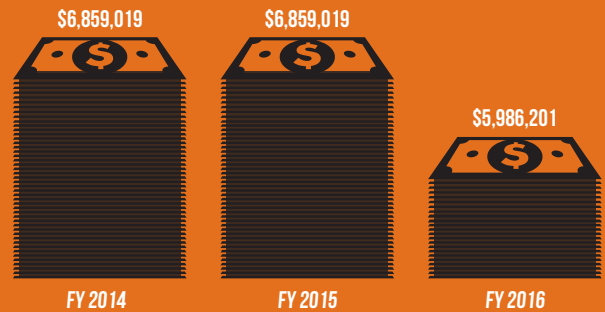
- \$7,154,081
- \$5,938,121
- \$1,092,676
- \$619,761
- \$615,461

2011 2012 2013 2014 2015

*Total Amount Raised Since 2011

STATE APPROPRIATIONS

OPERATING BUDGET \$12.5 MILLION



Accredited by the

